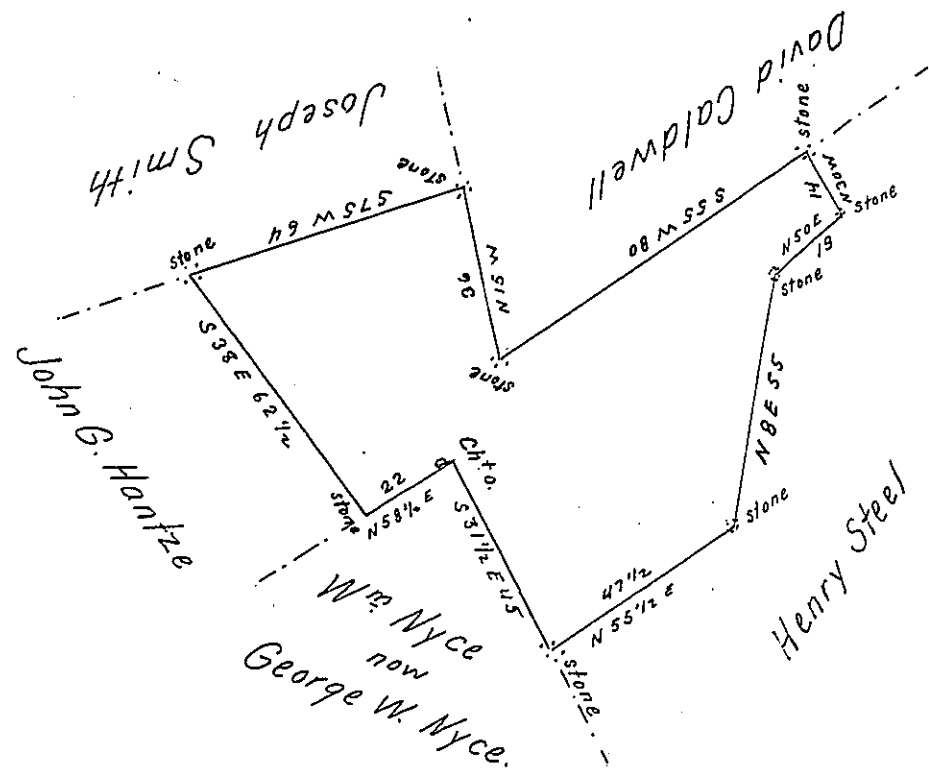


Lehman -  
PIKE  
✓



In pursuance of a warrant Issued the 21<sup>st</sup> day of ~~Oct~~<sup>Sepr</sup> 1816. Surveyed the 30<sup>th</sup> October 1816. to John G. Hantze the above described tract of land Situate in Delaware Township Pike Co. Containing Thirty Nine Acres and one hundred and ten perches and allowance of Six pr. Ct & ce.

To Richard T. Leech Esqr. } Jn<sup>o</sup> Brink D.S.  
Surveyor General of land Office }

IN TESTIMONY that the above is a copy of the original remaining on file in the Department of Internal Affairs of Pennsylvania, made conformably to an Act of Assembly approved the 16th day of February, 1833, I have hereunto set my Hand and caused the Seal of said Department to be affixed at Harrisburg, this tenth day of February 1905.

*Joseph R. Brown*  
Secretary of Internal Affairs.